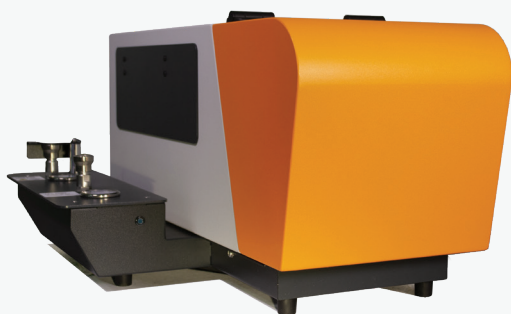


Reliable and analytically sampling of your
Gas, LPG and Gasbag samples to enhance
your TN/TS/TX Analysis performance

NexiS GM

The Nexis GM is an accurate and reliable sampling module offering easy and flexible measurement of TN/TS/TX in gaseous hydrocarbon matrices. The Nexis GM is available in three different configurations, all includes heavy duty and reliable fast connectors to meet your productivity needs and makes it even possible to handle pressurized and non- pressurized gas samples in a single gas sampling device.



The Nexis GM is designed to connect pressurized Gas or LPG sample cylinder easily and safely in order to safely load the sample loop connected to the 10-port valve of the NEXIS GM, where a fixed volume of sample will be introduced to the NEXIS TN/TS/TX Analyzer. The NEXIS GM is standard equipped with two sample loops: one sample loop with a volume of 10 mL for gasses and one sample loop with a volume of 100 uL for liquefied gas (LPG) samples.

The operation is simplified, once the sample cylinder or gasbag is connected to the sample introduction port of the NEXIS GM, the user just presses the start button in the Nexis LINK software to start the analysis. The user defines all sampling parameters from the standard methods, such as: temperatures, number of loop repeats, while an application specialist can further finetune the specific application requests.

The communication between the NEXIS GM and the PC goes through a dedicated USB port and the operation through intuitive Nexis LINK software. As Nexis LINK software also controls the analyzer, this combination makes it very easy to operate and perform accurate measurements of Gas and LPG samples.

Key advantages

Easy handling of pressurized and non-pressurized gas samples in one single device

Compact design with controlled Nexis LINK software operation

Safety sensor to ensure safe sample handling

Dual sample loop design for Gas and LPG samples

Technical specifications

Dimensions	300 x 290 x 570 mm (WxHxD)
Weight	18 kg
Power	Wide input; 115/230V, 50/60 Hz, max: 100 Watt
Voltage	115/230 V, 50/60 Hz
Carrier Gas connectors	1/8" SS Swagelok
Gasses	Ar or He (99,998%) technical grade 4.8
Primary pressure gas sample	25-35 bar
Secondary sampling pressure	2 – 5 bar; internal adjustable
Primary pressure liquefied gas	25-35 bar
Secondary sampling pressure	automatically controlled
Quick fit connector gas cylinder	1/4" Swagelok (SS) QC4 SS Series Swagelok
Quick fit connector LPG cylinder	1/4" Swagelok (SS) QC4 SS Series Swagelok
Evaporation Temperature	Software controlled, range ambient up to 75°C
Sample loops	10 mL for gasses and 100 uL for liquefied petroleum gas
Software	Nexis LINK
Available models	NEXIS GM: Gas & LPG module NEXIS GMS: Sulfinert Gas & LPG module

Contact info

For Technical support: techsupport@estanalytical.com

For Sales: sales@estanalytical.com

EST website: www.estanalytical.com

For more information contact your local dealer:



EST
analytical